



HAVE YOUR SAY!

HARTLEYVALE SPORTS PRECINCT

1. BACKGROUND

The Hartleyvale Sports Precinct is located in Observatory, Cape Town and caters for a variety of users and sporting codes. The Precinct is easily accessible by vehicle using the M5 and N2 as well as via rail, bus and minibus taxis. See Figure 1 below. Surrounding developments include the Observatory Local Area, the new Riverlands Development, the Black River Office Park, the South African Astronomical Observatory, the Valkenberg Hospital, and the Mary Kihn School for Hard-of-Hearing and Deaf Learners. Furthermore, it falls within the Two Rivers Urban Park (TRUP) located at the confluence of the Black and Liesbeek Rivers.

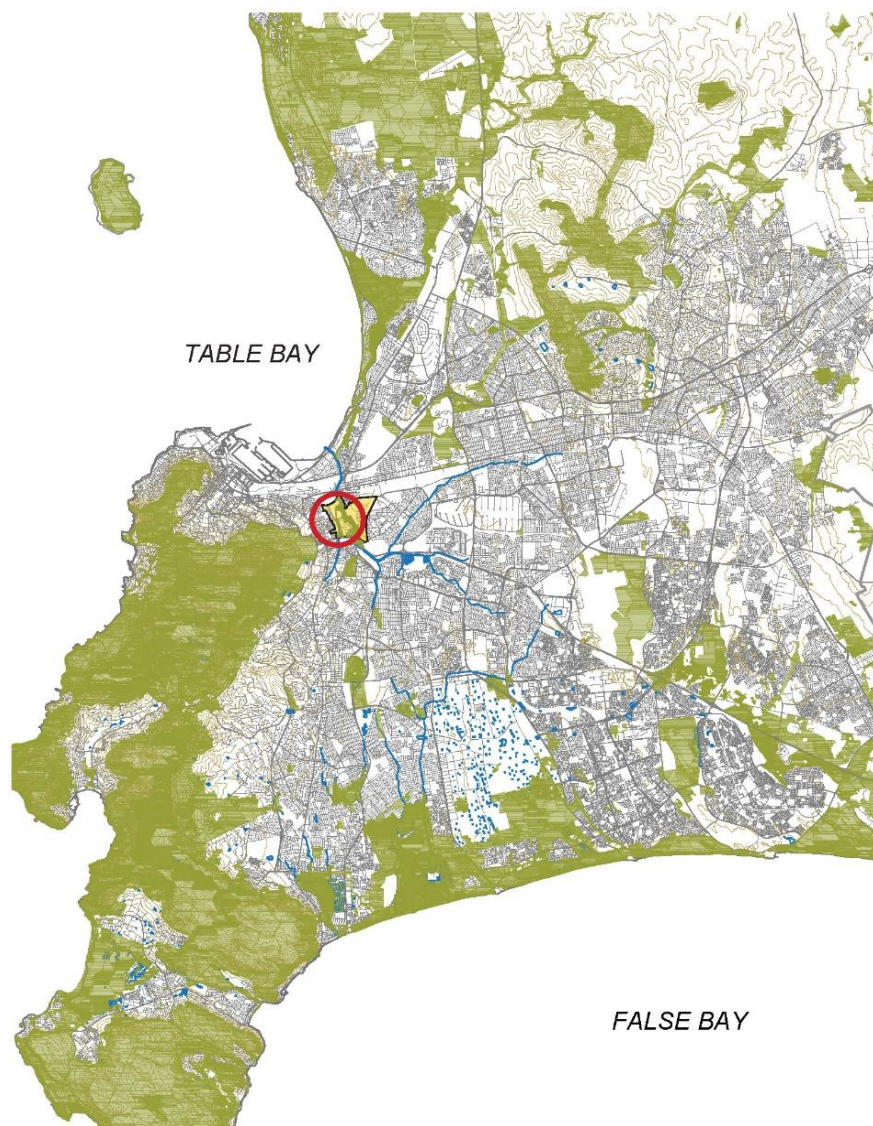


Figure 1: Hartleyvale Sports Precinct: Locality within the Metropolitan Area



2. CONTEXTUAL FRAMEWORK

The City of Cape Town's Recreation & Parks Department aims to enhance facilities at the Hartleyvale Sports Precinct, a cluster of key sporting facilities in the City of Cape Town. It includes the Malta Park Sports Grounds to the north and the Hartleyvale Sports Complex to the south of Station Road. See Figure 2 below.



Figure 2: The site: Hartleyvale Sports Precinct

A Contextual Framework is being developed to guide future decision-making and land-use planning at the scale of the Precinct. Stakeholder engagement is a key part of this process. Input from the community is being sought to ensure that the Contextual Framework aligns with the community's current use of, future needs and vision for the Precinct.



The draft Contextual Framework that is to be presented at the Open Day has been informed by initial stakeholder input. It also takes into account and aligns with the proposals in the approved Two Rivers Local Spatial Development Framework (2020). See Figure 3, below. Key spatial principles to ensure alignment with the LSDF include the following:

- **Compaction:** Intensification of the use of Hartleyvale Sports Precinct's activities as a key public resource
- **Continuity:** Acknowledging the importance of water and people flows
- **Protection:** Protecting the role of the site as part of broader natural and urban systems

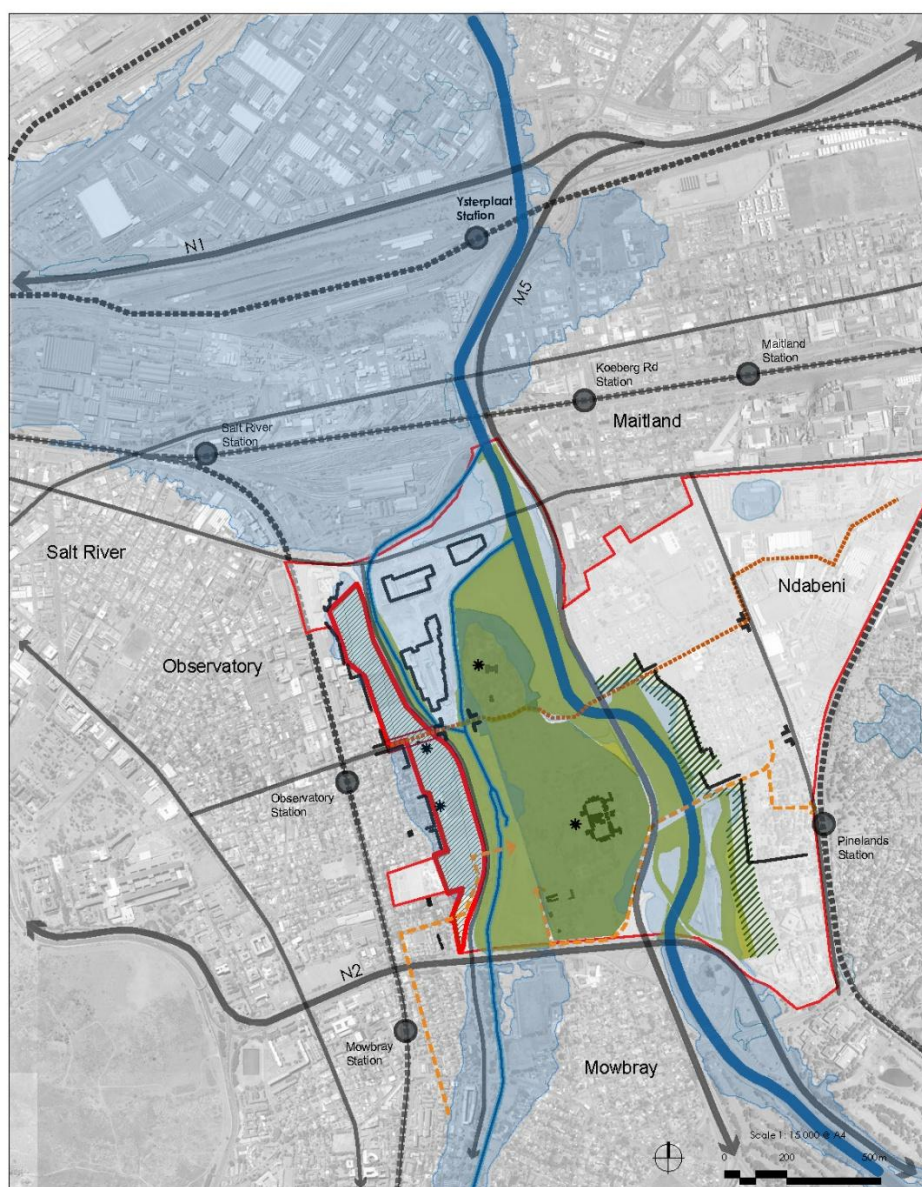


Figure 3: Hartleyvale Sports Precinct within the Local Area and TRUP

3. STAKEHOLDER ENGAGEMENT PROCESS

The stakeholder engagement process has been divided into two phases (see Figure 4). Initial engagements were held with key stakeholder groups and civic associations in early October 2025. The draft contextual framework was developed, taking the comments received into account. A broader Public Participation Process (PPP) is currently underway. A 60-day comment period from 13 November 2025 to 15 January 2026, including a public Open Day on 29 November 2025, will allow stakeholders to engage with the draft Contextual Framework (CF) and provide their input. Comments received during this period will be incorporated into the final Contextual Framework.

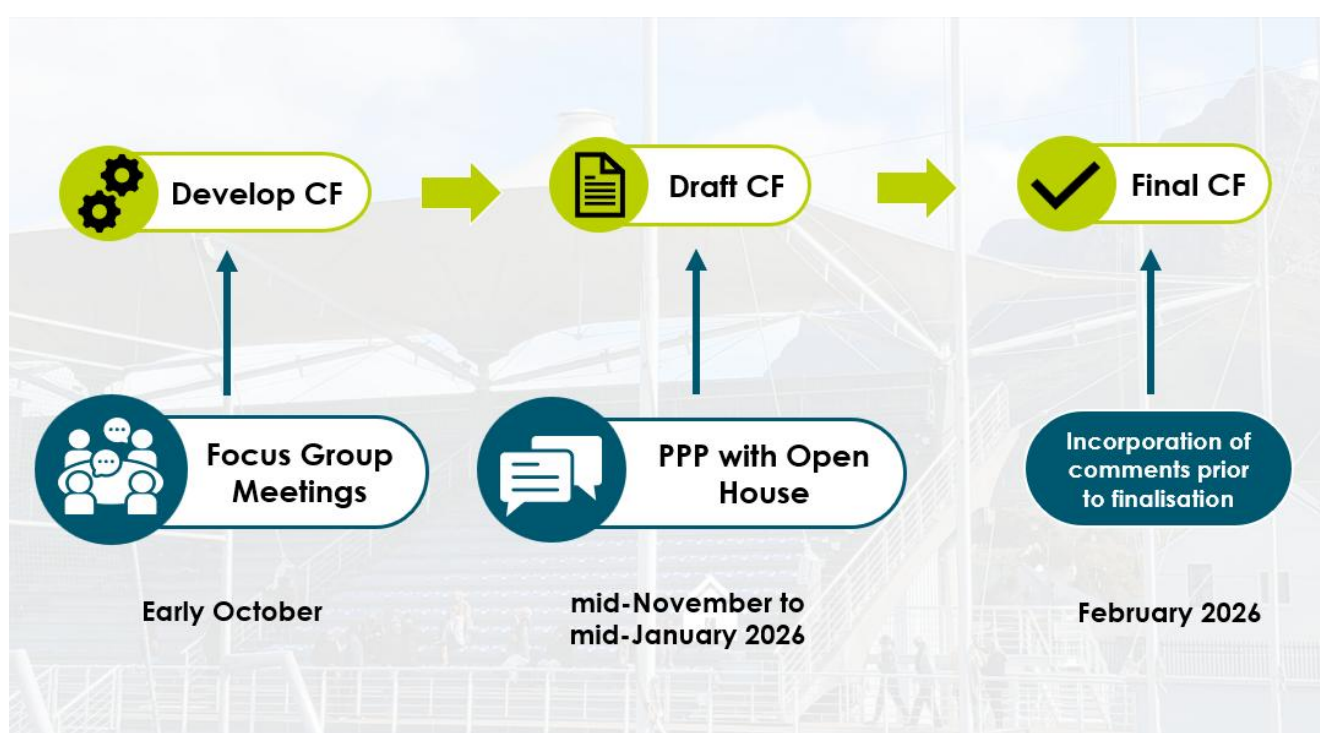


Figure 4: Stakeholder Engagement Process Overview

4. REQUEST FOR COMMENT

In terms of section 17 of the Local Government: Municipal Systems Act, Act 32 of 2000, residents and other interested parties may submit comments in respect of the public participation process for the Hartleyvale Sports Precinct Contextual Framework to the municipality between **13 November 2025** and **15 January 2026**.

A public Open Day will also be held at the Observatory Community Recreation Centre, corner Collingwood and Rawson Street on Saturday, 29 November 2025, between 10h00 and 13h00. If you are unable to attend the Open Day, poster displays will also be available online on Monday, 1 December 2025, via the following link: www.infinity.capetown/hartleyvale.