



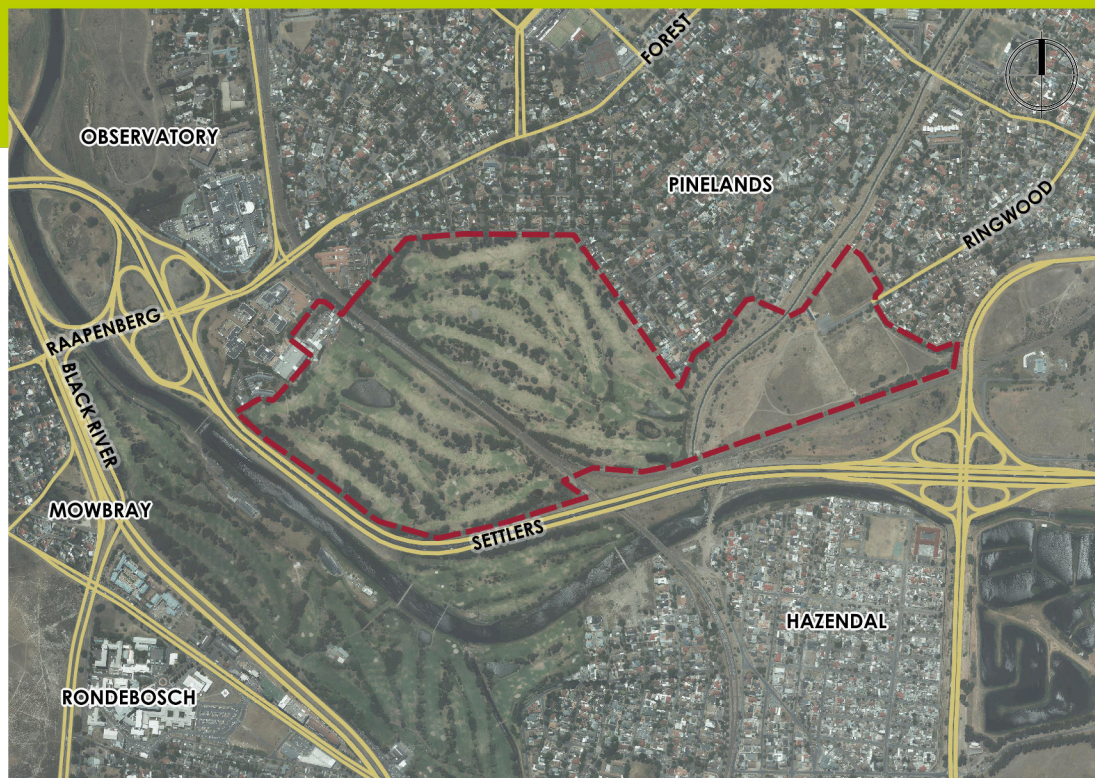
The Proposed Redevelopment of Mowbray Golf Course

The City of Cape Town's Property Development Department has initiated the preparation of an urban design and concept plan for the Mowbray Golf Course site. This will be followed by the required statutory processes, including applications, to enable the development of a mixed-use development which includes affordable housing.

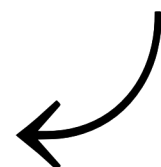
The approximately 49-hectare site consists of the Mowbray Golf Course and the Clyde Pinelands Association Football Club, located east of the golf course across the Elsies River canal. The site is bound by Settlers Way to the south, Links Drive to the north, and Raapenberg Road to the west.

This project aims to unlock the development potential of this strategically located government-owned precinct. The stakeholder engagement process for this project will focus on developing a vision for the site, ultimately leading to an Urban Design Framework that will guide future project phases. Given its strategic location and size, this site holds metropolitan significance and presents opportunities for creating a vibrant, accessible, and inclusive space.

A multi-disciplinary team, consisting of town planners, environmental and heritage practitioners, urban designers, landscape architects, geotechnical, civil and transport engineers, and economists, has been appointed to conduct specialised studies. These studies will support the necessary Land Use Management applications to secure appropriate development rights for the site, under the oversight of the Property Development Department.



**THE
PROPOSED
PROJECT
SITE**

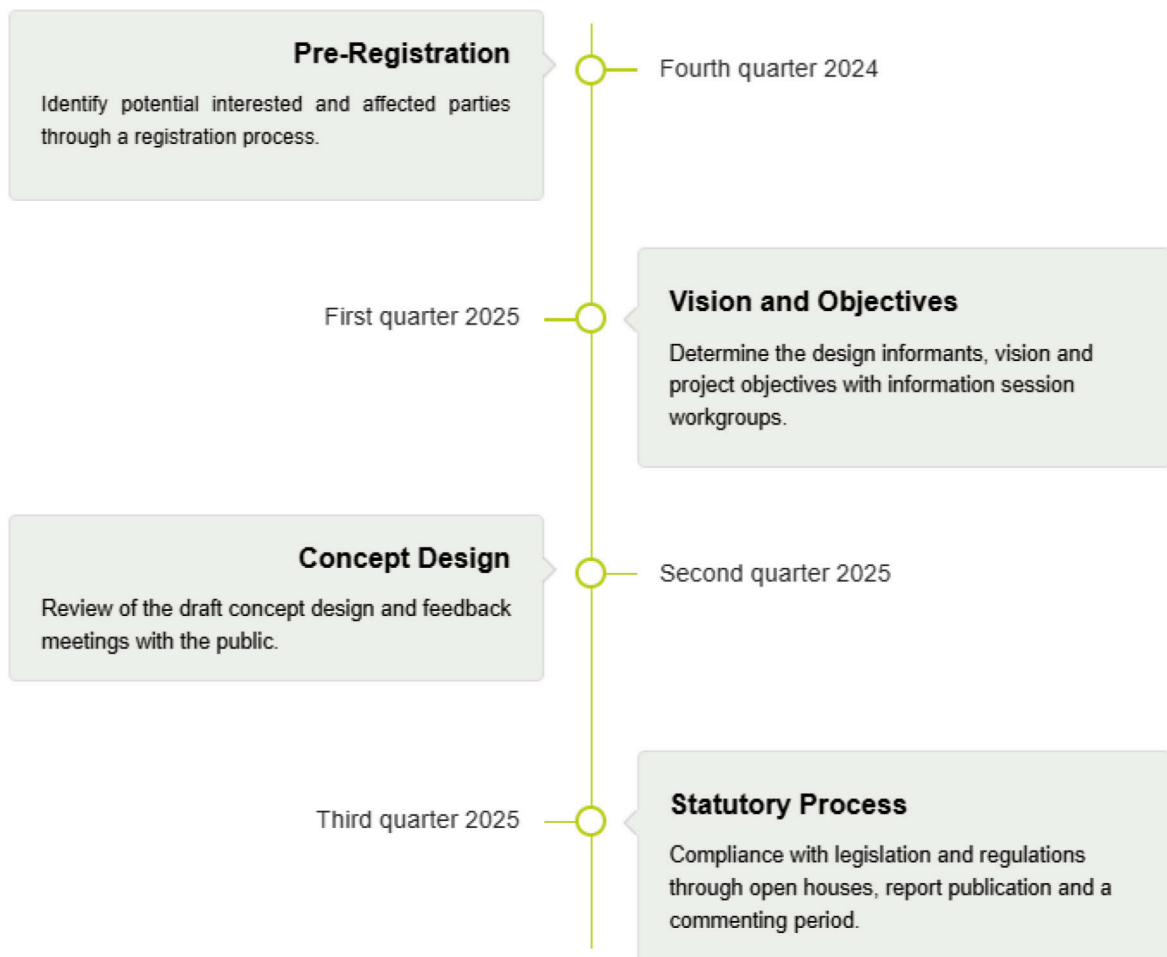




STAKEHOLDER ENGAGEMENT



Upcoming Stakeholder Engagements





PROJECT TIMELINE

2024



Registration Process

Registration for **interested parties** to be kept updated with the proposed project and provide input to the concept design process during a series of public meetings.

From 13 November 2024 onwards.

WE ARE HERE

2025



Vision and Concept Design

The vision and concept design phase for the site is envisaged as a participatory, design-oriented engagement with both local and institutional stakeholders and the broader public. A series of public engagements will take place to facilitate this process.

From the first quarter of 2025.

Municipal Asset Transfer Regulations

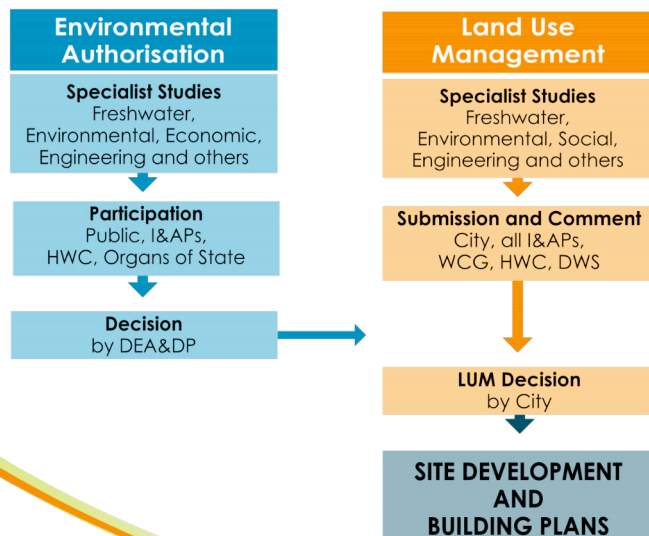
Public participation for transfer will include public advertisement for at least 30-days.

From the third quarter of 2025.

2026 onwards

Statutory process

From the third quarter of 2025.





PARTICIPATION

The pre-registration process opens on
Wednesday, 13 November, 2024.

If you wish to register your interest or
participate in the public
engagement process visit:

www.infinity.capetown/mowbray or
scan the **QR code below:**



Please contact us at
mowbray@infinity.capetown or **021 834 1602**
should you need assistance with the registration