

BOTANICAL IMPACT ASSESSMENT

PROPOSED DEVELOPMENT FRAMEWORK FOR STIKLAND SOUTH HOSPITAL SITE, ERF 6300



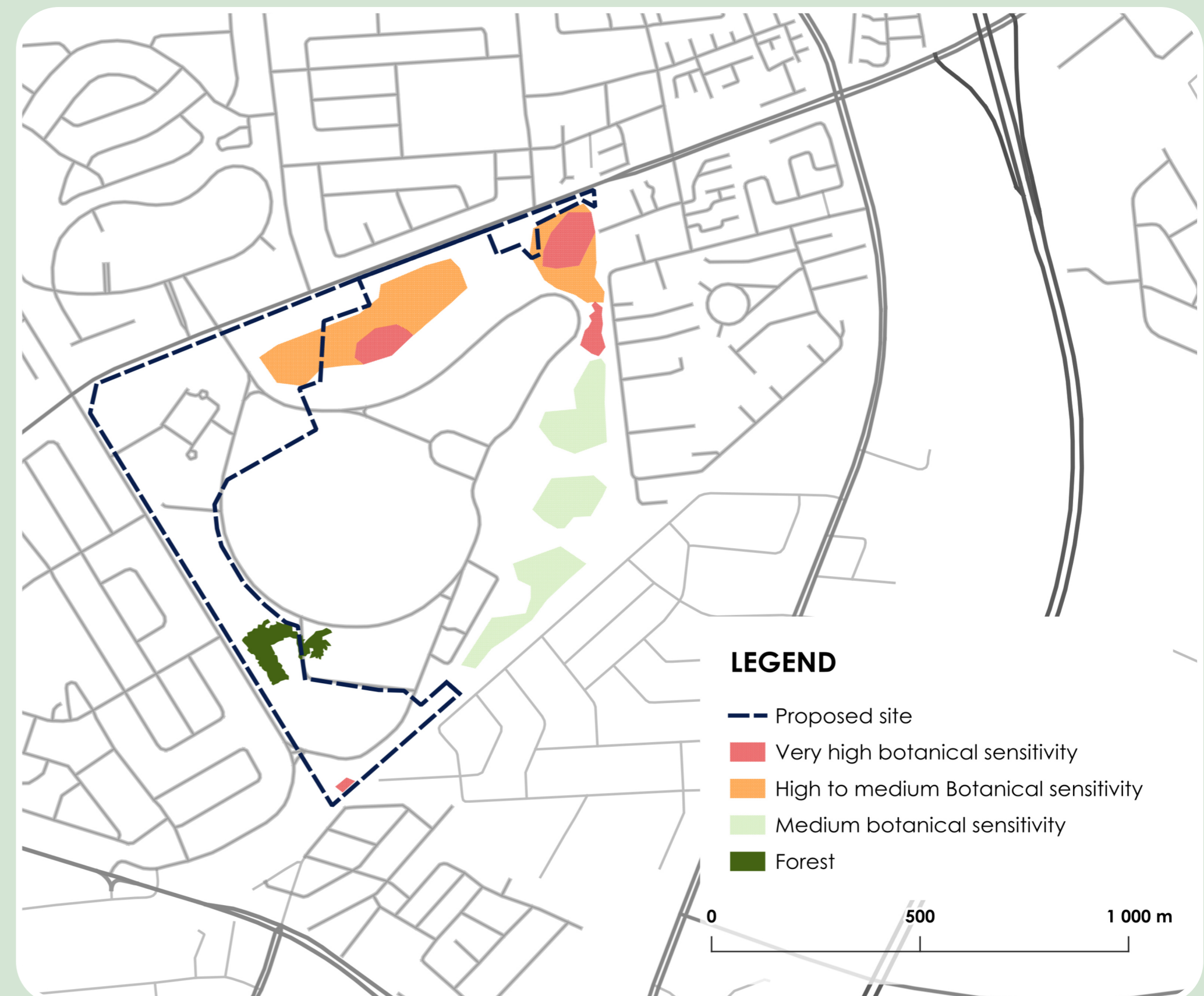
The Botanical Impact Assessment was undertaken by Nick Helme Botanical Surveys, 2025.



The site supports notable remnants of two Critically Endangered vegetation types, **Cape Flats Sand Fynbos** and **Swartland Shale Renosterveld**, with at least **five plant Species of Conservation Concern**.



At least 8ha of mostly indigenous vegetation remains in the area, with the **majority** of the study area being of **Low botanical sensitivity**, and contains no recorded Species of Conservation Concern.



IMPACTS AND RECOMMENDATIONS

Negative Impacts

Approximately 0.40 ha of Medium-High sensitivity areas will be removed to accommodate access roads along Old Paarl Road.

Positive Impacts

A large extent of Medium-High sensitivity vegetation will be conserved and all the ecologically connected Medium-High sensitivity areas will also be retained.

MITIGATION MEASURES

- The conservation areas (i.e., sensitive botanical areas on site) must be intensively managed in perpetuity due to their small size and state. It is suggested that a conservation partner be appointed to facilitate this management.
- Search and Rescue of all translocatable indigenous seeds, bulbs and whole plants in the development areas must be undertaken over a full year prior to any site development, to allow for the seasonal requirements during construction.
- Key ongoing tasks to address in the conservation areas will be alien invasive plant management (including herbs and grasses) and selective reintroduction of suitable nursery grown or rescued plant species that are locally indigenous and do well in the available on-site habitats.