

APPENDIX D

Site Photographs

Prior to commencement of vegetation clearing

(photographs taken on 25 July 2025 by Nick Helme – botanist)



Photograph 1: View looking south towards the main road from the centre of the originally proposed footprint for the house.



Photograph 2: View looking north-east from approximately 30masl, roughly 5-10m away from the preferred house footprint (35-45masl) and 30-40m away from the originally proposed house footprint (50masl).

Post commencement of vegetation clearing
(photographs taken on 25 February 2025 by Jonathan Kaplan – archaeologist)



Photograph 3: View looking north-east onto the area of vegetation cleared on Farm 974/1.



Photograph 4: View looking north-west onto the area of vegetation cleared on Farm 974/1.

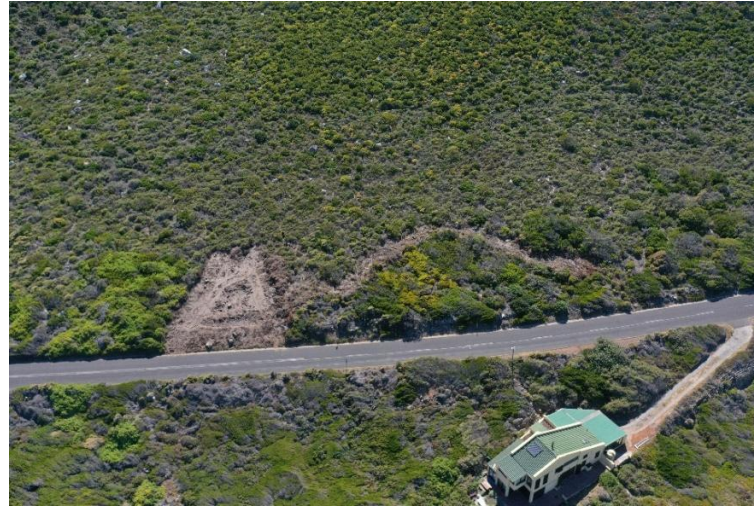


Photograph 5: View looking south-west onto the main road over the area of cleared vegetation.



Photograph 6: View looking south onto the main road over the area of cleared vegetation.

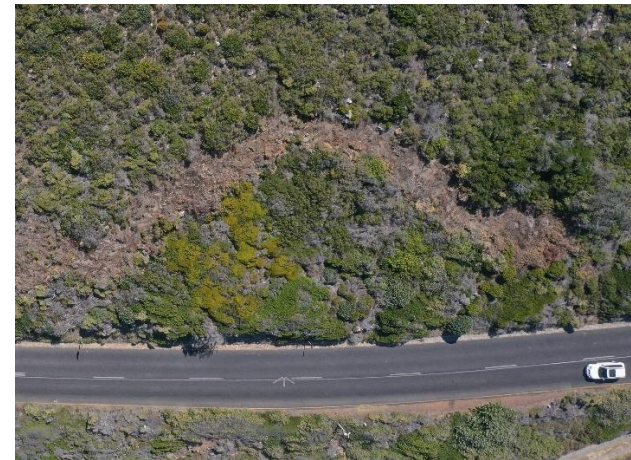
Aerial images of the site post vegetation clearing
(photographs taken on 26 February 2025 by Jeremy Rose - EAP)



Photograph 7: Aerial image of the vegetation cleared on the site as well as visible trail of trampled vegetation on the adjacent land

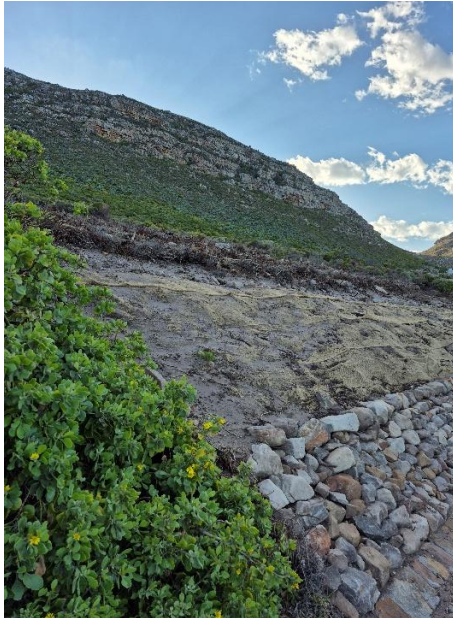


Photograph 8: Aerial image of the vegetation cleared from the site (Farm 974/1)



Photograph 9: Aerial image of the vegetation damaged/trampled on the adjacent land (Farm 979/9) which falls part of Table Mountain National Park

Post erosion mitigation and initial rehabilitation measures
(photographs taken on 4 April 2025 by Kelly Gilmour – Cand EAP)



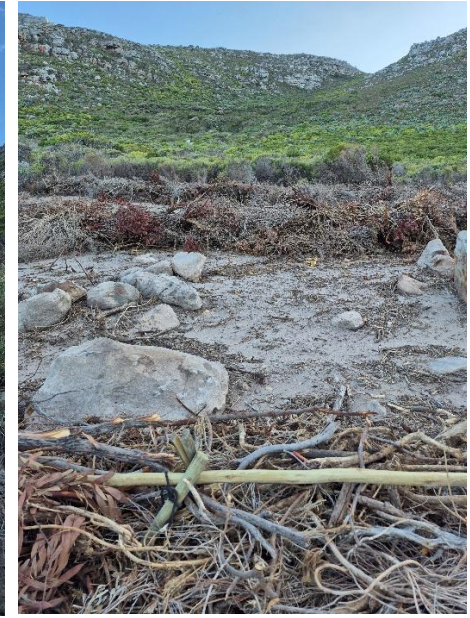
Photograph 10: Erosion mitigation measures implemented on site including rock stabilisation and staked biddum cloth



Photograph 11: Loose rocks stacked alongside the M65



Photograph 12: Cut branches stacked in secure piles to create natural contours



Photograph 13: Cut branches stacked in secure piles to create natural contours in between which seeds of damaged indigenous vegetation found on site were scattered

Regrowth occurring onsite (Farm 974/1)
(photographs taken on 4 April 2025 by Kelly Gilmour – Cand EAP)



Photograph 14: Regrowth occurring on site through the biddum cloth



Photograph 15: Resprouting occurring on site from cut stems of cut plants



Photograph 16: Regrowth occurring on site between the piles of branches



Photograph 17: Regrowth occurring on site between the piles of branches

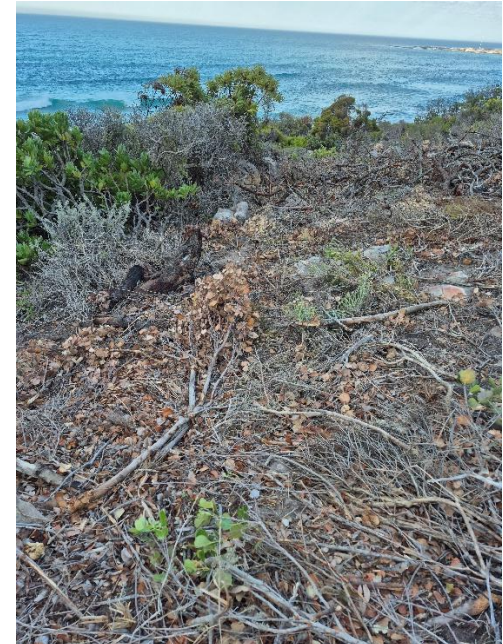
Regrowth occurring on the adjacent land (Farm 979/9)
(photographs taken on 4 April 2025 by Kelly Gilmour – Cand EAP)



Photograph 18: Section of cleared vegetation leading to pathway of trampled vegetation on Farm 979/9



Photograph 19: Trampled vegetation on Farm 979/9



Photograph 20 Trampled vegetation on Farm 979/9

Site conditions on Farm 974/1 on 08 October 2025

(photographs taken by Kelly Gilmour – Cand EAP)



Photograph 21: View of the site from the main road looking north-east. The area near the road is dominated by grasses.



Photograph 22: View of the site from the main road looking north showing predominantly grasses.



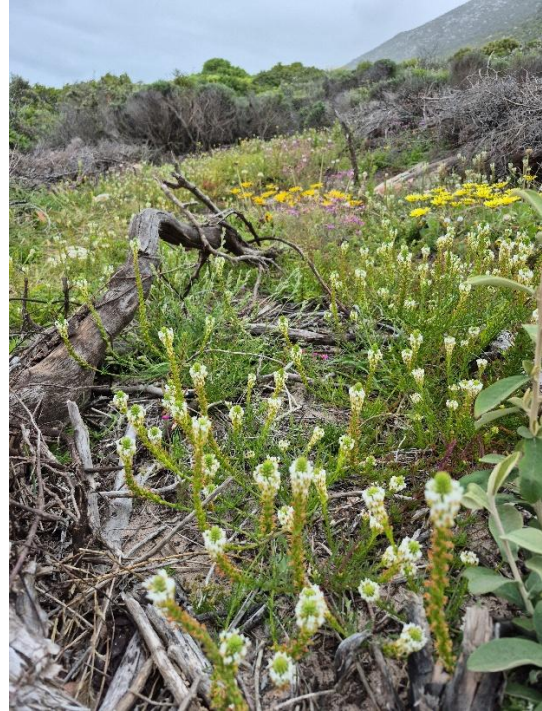
Photograph 23: View of the lower section of the disturbed area of the site looking north-west.



Photograph 24: Grass species dominate the disturbed area near the road.



Photograph 25: Wild Cape daisies growing on the upper slopes of the disturbed area on site.



Photograph 26: Wildflowers located on the upper slopes of the disturbed area on the site.



Photograph 27: Wildflowers, indigenous vegetation and geophytes located on the upper slopes of the disturbed area on the site.



Photograph 28: View looking north-west and downslope onto the disturbed area.

Regrowth occurring on the adjacent land (Farm 979/9) on 08 October 2025
(photographs taken by Kelly Gilmour – Cand EAP)



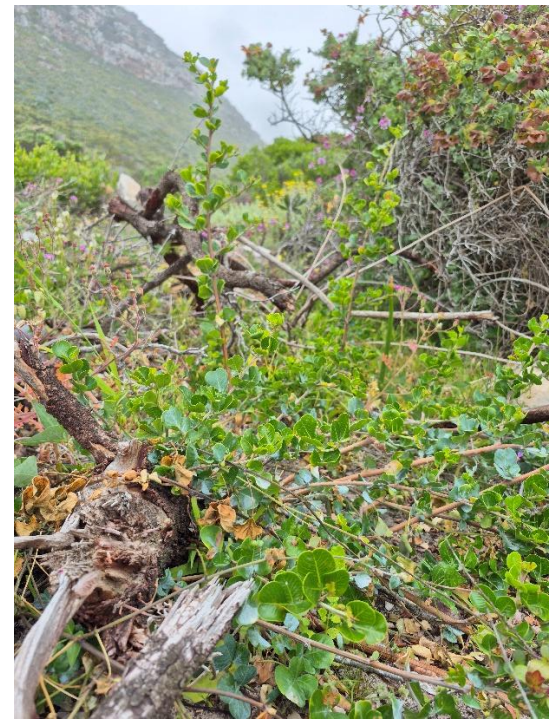
Photograph 29: Wildflowers growing in the brush cut area on Farm 979/9



Photograph 30: Wildflowers growing in the brush cut area on Farm 979/9



Photograph 31: Regrowth of vegetation on Farm 979/9



Photograph 32: Regrowth of *Searsia* spp. From cut plant stem on Farm 979/9